

Integrated Education and Training (IET) programs in New Mexico



NEW MEXICO
HIGHER EDUCATION
DEPARTMENT



Fostering Student Success from Cradle to Career



Quality IET Programs

- ▶ What is IET?
 - Three Integrated Components
 - Educational and Career Advancement
- ▶ IET Program Design Process and Guiding Principles

Group Discussion: What is IET?



“...a service approach that provides *adult education and literacy activities* **concurrently** and **contextually** with *workforce preparation activities* and *workforce training* for a specific occupation or occupational cluster for the purpose of educational and career advancement ”

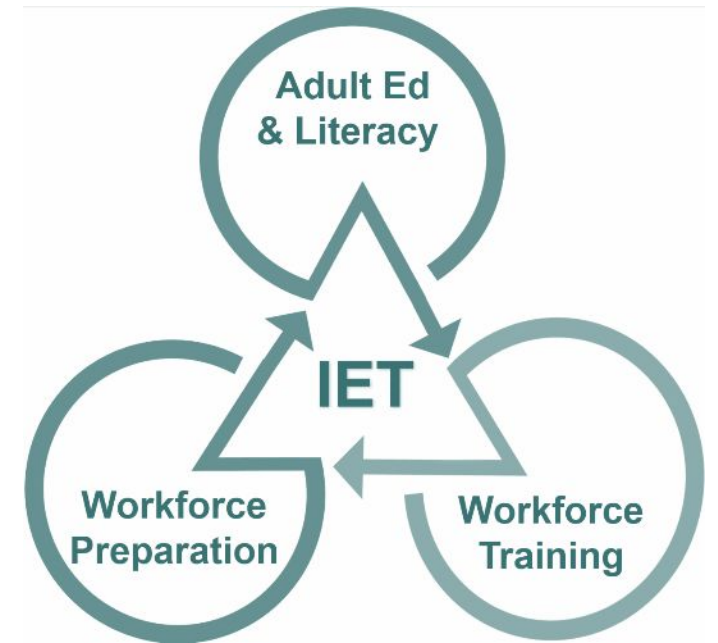
(34 CFR §463.35)

What is meant by the phrase
“concurrently and contextually?”

Please share your thoughts.

IET Component Integration

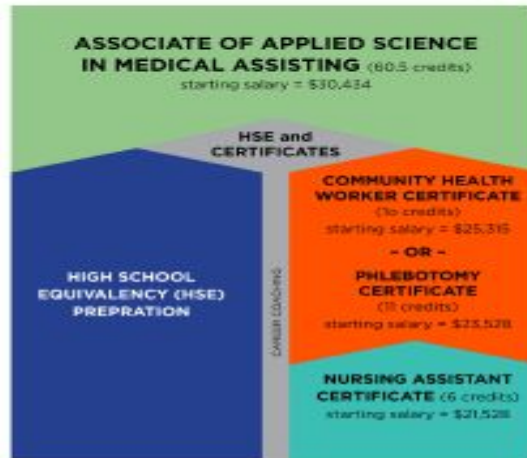
- ▶ Adult education and literacy activities, workforce preparation activities, and workforce training activities must:
 - Each be of sufficient **intensity and quality**
 - Be based on the most **rigorous research available**, particularly with respect to improving reading, writing, mathematics, and English proficiency of eligible individuals
 - **Occur simultaneously** within the overall scope of the IET program
 - Use **occupationally relevant** instructional materials
- ▶ This alignment integration is organized through a **single set of learning objectives** that identifies specific adult education content standards, workforce preparation skills, and workforce training competencies.



IET - Career Pathways in Adult Education at Santa Fe Community College



IET Certificate Programs



WHAT IS IET?

- The Integrated Education Training (IET) works with the I-BEST (Integrated Basic Ed Skills Training) Program at SFCC to provide students with career pathways for automotive, facilities technician, or health care.
- Students learn job-related skills while strengthening their reading, writing, and math abilities.
- Students can build a career and academic skills at the same time, reducing the number of semesters they need to be in school before they graduate and are prepared for their new career.

In 1 to 3 semesters students can:

- Complete a college certificate.
- Receive job placement support upon completion.
- Improve your reading, writing, math, and English skills.
- Get your High School Equivalency (if you need one).
- Earn credits towards an associate degree.

IET PROVIDES:

- A study plan designed for students' busy schedule
- The opportunity to prepare for a career in a high-demand job area
- Individual attention and advising with career and academic planning Financial aid guidance and support Improved computer skills
- User-friendly adult education classes and tutoring
- Connection with a group of adult classmates in a safe and comfortable learning community.



Five Key Areas of Research



State and Local
IET Policy and
Career
Pathways
Options



Regional
Workforce
Development
Needs



Community
Resources to
Support your
Program



Emerging and
Promising
Practices in IET
Programs



Learner and
Business
Needs



5) Learner and Business Needs



Learner Needs

1. What are the educational and career goals of potential learners?
2. What types of curriculum design and delivery strategies work best?
3. What experiences outside the classroom (both positive and negative) impact learner success?
4. What ideas do learners have about how IET programs should be designed?

Business Needs

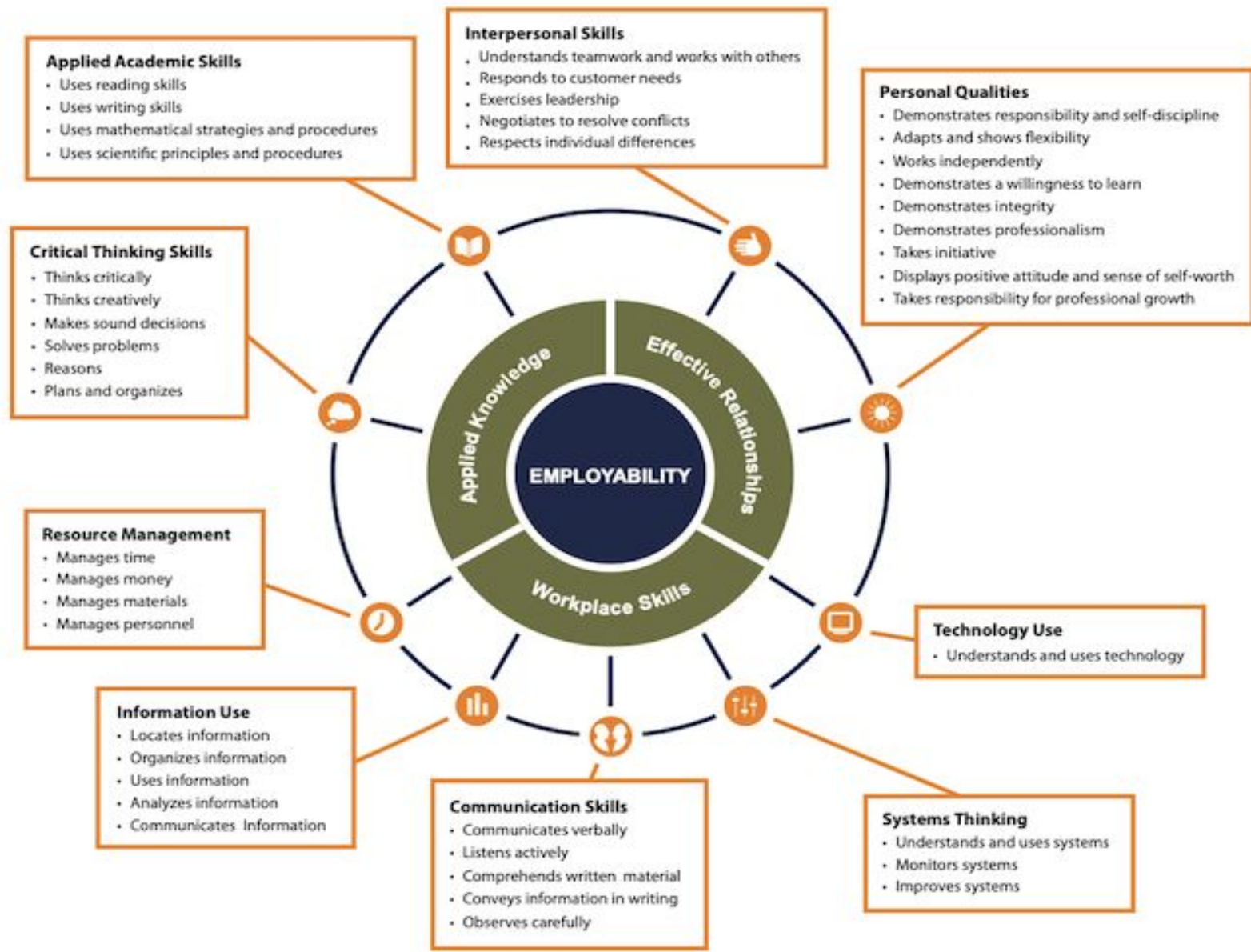
1. How do local employers recruit and hire for the occupations you might target with an IET program?
2. What challenges do people in that occupation have that make it difficult for them to succeed on the job?
3. What makes employees successful in these companies?
4. How do employees advance in their career in these companies?

IET - Single Set of Learning Objectives



Three Components in all SSLOs:

- ▶ 1. Workforce Training Competencies (content class)
- ▶ 2. Adult Education content standards
- ▶ 3. Workforce Preparation Skills



Employability Skills Framework

<https://cte.ed.gov/initiatives/employability-skills-framework>

WIN IET Programs

Santa Fe Community College

- Facilities Maintenance Technician
- Certified Nursing Assistant
- Phlebotomy
- Community Health Worker

Luna Community College

- Emergency Medical Technician (EMT)
- Community Health Worker

Northern New Mexico College

- Electrical Math
- OSHA 10
- Certified Nursing Assistant

UNM-Taos

- Emergency Medical Technician

For More Information Please Contact:

Santa Fe Community College

Jean Scheaffer - jean.scheaffer@sfcc.edu

505-428-1035

Luna Community College

Lisa Benston - lbentson@luna.edu

505-454-2564

Northern New Mexico College

Cindy Gallegos - Cindy.Gallegos@nnmc.edu

505-614-5139

UNM-Taos

Employer Survey: Please use the barcode and complete the employer survey